

SAFETY GEAR

- **6 x Mooring / dock lines**
- **8 x Fenders**
- **55lb Stainless steel anchor with galvanised chain**
- **35lb Britany anchor with chain & warp**
- **Anchor bridle, shackles and hook**
- **Life jackets and safety harnesses per max pax**
- **Bell**
- **Flare kit**
- **Binoculars**
- **Navigation tools: Parallel rule, compass, dividers**

GENERAL EQUIPMENT

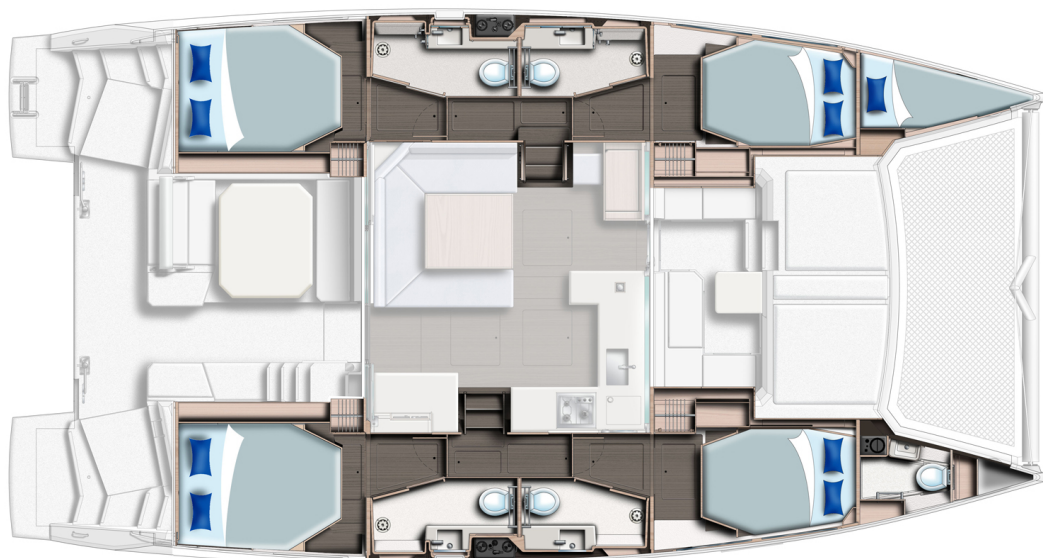
- Owner's Operating Manual
- 6 x Fire extinguishers
- Fire suppression system
- NMMA Certification
- CE Certification

CRUISING GEAR

- **Bed linens per max pax**
- **Plates, cups, saucers, glasses per max pax**
- **Flatware per max pax**
- **Pots, pans, miscellaneous food prep tools**
- **Cooking and serving utensils**
- **Coffee pot, tea kettle, toaster**
- **Towels and washcloths per max pax**
- **Snorkeling gear per max pax**

GENERAL SPECIFICATIONS

Length Overall:	13.72m/45ft 0in
Waterline Length:	13.07m/42ft 11in
Mast Height:	21.34m/70ft 0in
Beam:	7.35m/24ft 2in
Draft:	1.50m/4ft 11in
Displacement:	14500kg/31967lb
Fuel Capacity:	700L/185gal
Water Capacity:	780L/206gal
Sail Area:	120sqm/1298sqft
Engines:	2 x Yanmar 45hp diesel engines with sail drives



The Builder reserves the right to change or amend the contents of this document at any time without prior notification to any third party, and no liability will be accepted for errors contained within the same.

Initials

Initials